

PLAIN CITY

PART OF LOTS 39 & 58, & ALL OF LOTS 52 & 57 PLAT B

TAXING UNIT: 21

SCALE 1" = 50'

SEE PAGE 56

2650

NORTH

STREET

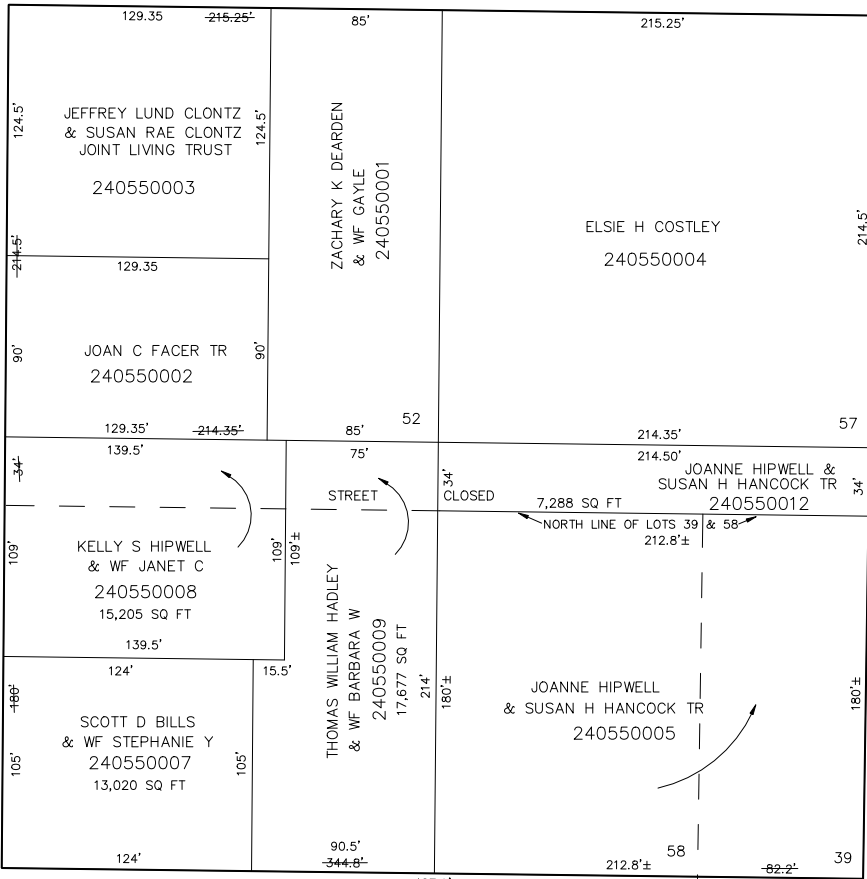
S 89°17' E

WEST STREET

WEST STREET

4275

N 0°27'30" E



SEE PAGE 42

SEE PAGE 54

2600

NORTH

N 0°51' E

WEST STREET

WEST STREET

4200

N 25°9' E

259'

SEE PAGE 50

2675

NORTH

STREET

S 89°17' E

SEE PAGE 50

SEE PAGE 51

SEE ORIGINAL DEDICATION
PLAT OF PLAIN CITY IN
BOOK 5, PAGE 80 OF RECORDS.